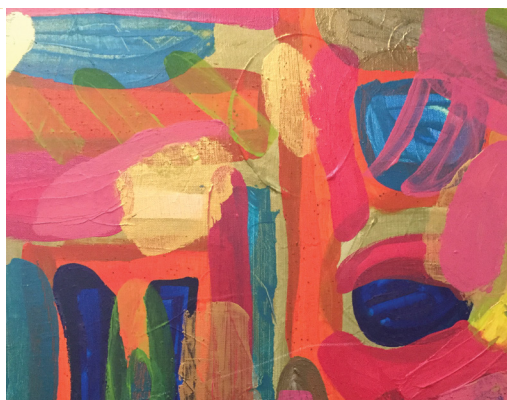
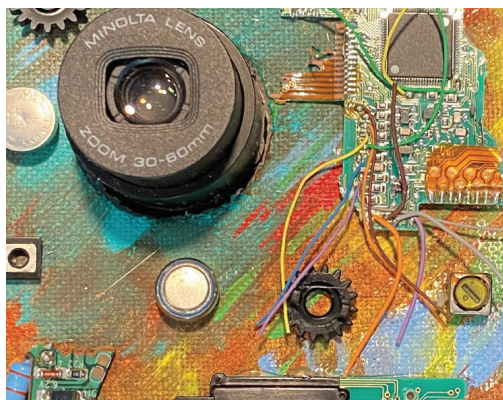




CALL FOR ARTISTS

EXPRESSIONS

FEATURING ARTISTS WITH DISABILITIES



Deadline for applications is January 30, 2021
To apply, review the instructions on the reverse side.

11th Annual Expressions Art Exhibition
Opening Reception, Friday, March 5, 2021 |
6:00 p.m. to 10:00 p.m.

Rochester Brewing & Roasting Company
2129 Washington St | KCMO 64108

ABOUT EXPRESSIONS

Expressions strives to promote artists with disabilities by featuring their work in professionally organized art exhibitions and offering innovative educational and networking workshops that connect them to the broad regional creative community.

Accessibility options at the event include large-print and Braille event programs, volunteer guides for descriptive audio tours, sign language interpreters and accessible entrances.

The Whole Person, a nonprofit center for independent living, is seeking artists for its 11th Annual Expressions Art Exhibition. Exhibiting artists will receive an honorarium, the amount of which will be dependent upon available funding and the number of artists selected.

***For sponsorship information,
or to contact the exhibition curator,
email tgoddard@thewholeperson.org.***



The Whole Person

People with Disabilities Leading Independent Lives

3710 Main Street, Kansas City, MO 64111
816-561-0304 • thewholeperson.org/expressions



EXPRESSIONS

FEATURING ARTISTS WITH DISABILITIES

Expressions opening reception:
Friday, March 5, 2021, 6:00 p.m. to 10:00 p.m.
Rochester Brewing & Roasting Co.
2129 Washington St. | Kansas City, MO 64108

Who can apply?

All artists, 18 years old and over, with documented or self-identified disabilities (*physical, cognitive, mental health, chronic health conditions, sensory, or other*) in the Greater Kansas City area are invited to submit their work for consideration in the 11th Annual Expressions Art Exhibition. Artists working in various mediums (painting, photography, graphics, print, sculpture, dance, music, spoken word, etc.) are encouraged to apply.

What will participation in Expressions entail?

In addition to having their work exhibited at multiple venues from March 2021 through March 2022, selected artists will receive an honorarium and have opportunities to participate in professional development workshops. Performing artists will have an opportunity to perform on opening night on March 5. In addition to the gallery exhibition, there will be an online exhibition for selected artists. All applicants will have their work featured on The Whole Person's website.

How will artists be selected?

Artists will be selected by a volunteer committee of arts professionals, who will look for artistic merit and thoughtful responses to questions about your work. For accommodations or guidance on the application process, artists may contact Terri Goddard at 816-627-2220 or by email to tgoddard@thewholeperson.org

How can I apply?

Follow the instructions below to complete your application.

Collect the following information *BEFORE* starting on your application:

- **For Visual Artists:** *Submit three high-resolution, color images of artwork you would like to have considered for the exhibition. Submit as jpeg files with a resolution of 300 dpi.* All work must be created in the last three years. Label each image in the following format: *your last name_title of work.jpg*.
For Performing Artists: *Please provide a file or link (YouTube, Vimeo or Facebook links) to an audio or video recording.*
If you do not have access to a recording, please contact The Whole Person to make other arrangements.
- **Art type/medium of each piece**
 - Visual Art: Ceramics/Pottery, Digital Imaging, Graphic Design, Illustration, Jewelry, Mixed Media, Painting, Sculpture, Textiles, Photography
 - Performing Art: Dance, Music, Theatre, Spoken Word
 - Other: Please specify media/materials

- **Title, year, and dimensions (in inches) of each piece submitted. All digital pieces must be printed with measurements in inches.**

- **A work statement describing each piece submitted**

- **Provide an artist statement including the following:**

A general introduction of your work (100-150 words), including themes, inspiration, media used, and technical approach.

Fill out the application starting October 19, 2020:

- Online at www.thewholeperson.org/expressions (preferred method for application)
- Application assistance is available by appointment. Contact Terri Goddard at 816-627-2220 or by email to tgoddard@thewholeperson.org

**The deadline to apply is
January 30, 2021**

**INCOMPLETE APPLICATION INFORMATION
MAY EXCLUDE YOU FROM CONSIDERATION**

Please note that dates, receptions, and exhibition locations are subject to change with COVID-19 measures.