

The Whole Person connects people with disabilities to the resources they need by supporting independent choice and advocating for positive change in the community.

## > REVENUE \$32,865,583.27

Government Funded for Services <b>96.4%</b>	\$31,686,989.46
Government Grants <b>2.4%</b>	\$781,251.05
Other Fees for Service <b>.4%</b>	\$134,379.19
Individuals, Foundations, and Corporate <b>.5%</b>	\$167,926.93
United Way Donor Designated <b>.3%</b>	\$112,575.70
Realized/Unrealized Gain on Investments	
Interest and Dividends <b>-.8%</b>	-\$267,256.52
In-Kind Revenue <b>.1%</b>	\$23,242.49
Other Income <b>.2%</b>	\$64,734.81
Restrictive Income <b>.5%</b>	\$161,740.16

## < EXPENSES \$32,287,301.36

Programs <b>85%</b>	\$27,444,206.16
Fundraising <b>1.8%</b>	\$581,171.42
Management and General Operating <b>13.2%</b>	\$4,261,923.78

## BOARD OF DIRECTORS

Members of the Board support our programs and services through committee work and financial contributions.

In addition, more than half of our Board members are people with significant disabilities and serve as role models for our consumers.



BLACK OR AFRICAN AMERICAN	22%
WHITE	67%
HISPANIC OR LATINO	1%
OTHER	0%



## CONNECTIONS WITH KC

### Sponsored Events

TWP supported 10+ community organizations/events with sponsorships such as:

- Stroke Onward, CCVI Trolley Run, Midwest Ability Summit, Wonderland Camp, National Kidney Foundation, Thrive Together, Midwest Adaptive Sports Day at the Lake, Ability KC, Henderson Foundation, Midtown KC Now

### Community Outreach

183 Community Activities & Engagement

- Activities focused around community education and public information, collaborating and networking, outreach efforts to under-served populations, and community and systems advocacy.

### Volunteers

300 Volunteers served 2,000 hours

- Monetary value of volunteer time \$57,080

### TWP Signature Events

- Expressions Art Exhibition, Planting Independence Yard Clean-Up, Big Dill Classic Pickleball and Cornhole Tournament, 32nd Anniversary of the Americans with Disabilities Act Party, and Night of Independence Awards Gala

## CONSUMERS SERVED\* 2,288

FEMALE - 1,425	62.3%
MALE - 863	37.7%

BLACK OR AFRICAN AMERICAN	56.8%
WHITE	34.0%
HISPANIC OR LATINO	3.5%
ASIAN	1.1%
RACE AND ETHNICITY UNKNOWN	3%
AMERICAN INDIAN OR ALASKA NATIVE	.3%
NATIVE HAWAIIAN/PACIFIC ISLANDER	.4%
TWO OR MORE RACES	.9%

## DISABILITIES SERVED

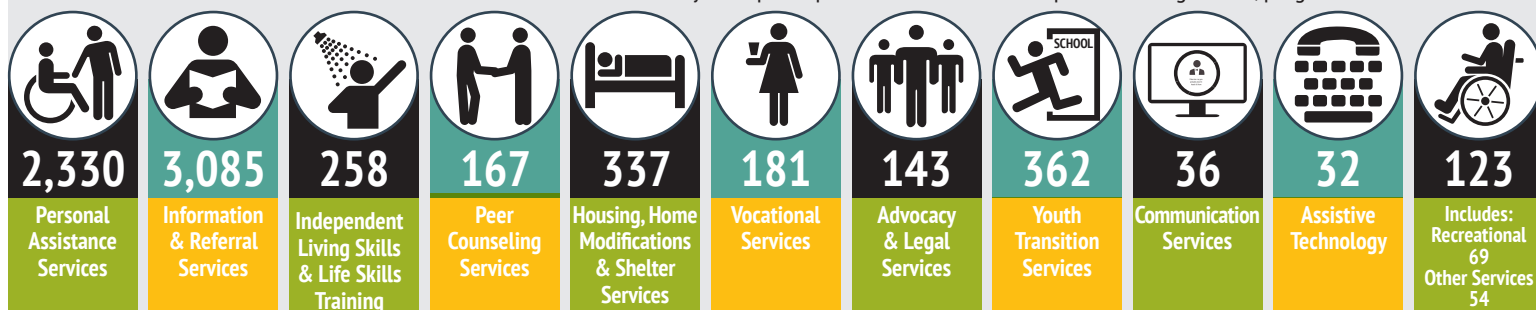


MULTIPLE DISABILITIES	54.6%
PHYSICAL	25%
COGNITIVE	7.4%
OTHER DISABILITIES	6.5%
MENTAL/EMOTIONAL	2.6%
HEARING	2.2%
VISION	1.6%

**5 CORE SERVICES: INFORMATION & REFERRAL SERVICES; INDEPENDENT LIVING SERVICES; INDIVIDUAL & SYSTEMS ADVOCACY; PEER SUPPORT & MENTORING; TRANSITION SERVICES**

## 5,875 INDEPENDENT LIVING SERVICES PROVIDED FROM OCTOBER 1, 2021 - SEPTEMBER 30, 2022\*

\*Consumers may have participated in more than 1 independent living service/programs listed below.



## The Year in Numbers FY 21/22

The Whole Person connects people with disabilities to the resources they need by supporting independent choice and advocating for positive change in the community.

### >Revenue **\$32,865,583.27**

Government Funded for Services <b>96.4%</b>	\$31,686,989.46
Government Grants <b>2.4%</b>	\$781,251.05
Other Fees for Services <b>.4%</b>	\$134,379.19
Individuals, Foundations, and Corporate <b>.5%</b>	\$167,926.93
United Way Donor Designated <b>.3%</b>	\$112,575.70
Realized/Unrealized Gain on Investments	
Interest and Dividends <b>-.8%</b>	-\$267,256.52
In-Kind Revenue <b>.1%</b>	\$23,242.49
Other Income <b>.2%</b>	\$64,734.81
Restrictive Income <b>.5%</b>	\$161,740.16

### <Expenses **\$32,287,301.36**

Programs <b>85%</b>	\$27,444,206.16
Fundraising <b>1.8%</b>	\$581,171.42
Management and General Operating <b>13.2%</b>	\$4,261,923.78

## Board of Directors

Members of the Board support our programs and services through committee work and financial contributions. In addition, more than half of our board members are people with significant disabilities and serve as role models for our consumers.

5 Male and 4 Female • 56% with a significant disability	
Black or African American	22%
White	67%
Hispanic or Latino	1%

## Staff Members

Full time employees	101
Staff members with significant disabilities	60%

### Consumer Served **2,288**

Female - 1425	62.3%
Male - 863	37.7%
Black or African American	56.8%
White	34.0%
Hispanic or Latino	3.5%
Asian	1.1%
Race and ethnicity unknown	3%
American Indian or Alaska Native	.3%
Native Hawaiian/Pacific Islander	.4%
Two or More Races	.9%

### Disabilities Served **2,288**

Multiple Disabilities	54.6%
Physical	25%
Cognitive	7.4%
Other Disabilities	6.5%
Mental/Emotional	2.6%
Hearing	2.2%
Vision	1.6%

## Independent Living Services

Five Core Services: Information & Referral Services; Peer Support & Mentoring; Transition Services; Independent Living Services; and Individual & Systems Advocacy.

Services provided from October 1, 2021 - September 30, 2022\* (\*Consumers may have participated in more than 1 independent living service/program.)

Advocacy/Legal Services	143
Assistive Technology	32
Communication Services	36
Housing, Home Modifications, and Shelter Services	337
IL Skills Training and Life Skills Training	258
Information and Referral Services	3085
Peer Counseling Services	167
Personal Assistance Services	2330
Recreational Services	69
Youth/Transition Services	362
Vocational Services	181
Other Services	54

## Connections with Kansas City

### Sponsored Events

TWP supported 10+ community organizations/events with sponsorships such as: Stroke Onward, CCVI Trolley Run, Midwest Ability Summit, Wonderland Camp, National Kidney Foundation, Thrive Together, Midwest Adaptive Sports Day at the Lake, Ability KC, Henderson Foundation, Midtown KC Now

### Community Outreach

#### 183 Community Activities and Engagement

- Activities focused around community education and public information, collaborating and networking, outreach efforts to underserved populations, and community and systems advocacy.

### Volunteers

#### 260 Volunteers served 1,858 hours

- Monetary value of volunteer time is \$53,027

### TWP Signature Events

- Expressions Art Exhibition, Planting Independence Yard Clean-Up, Big Dill Classic Pickleball and Cornhole Tournament, 32nd Anniversary of the Americans with Disabilities Act Party, and Night of Independence Awards Gala